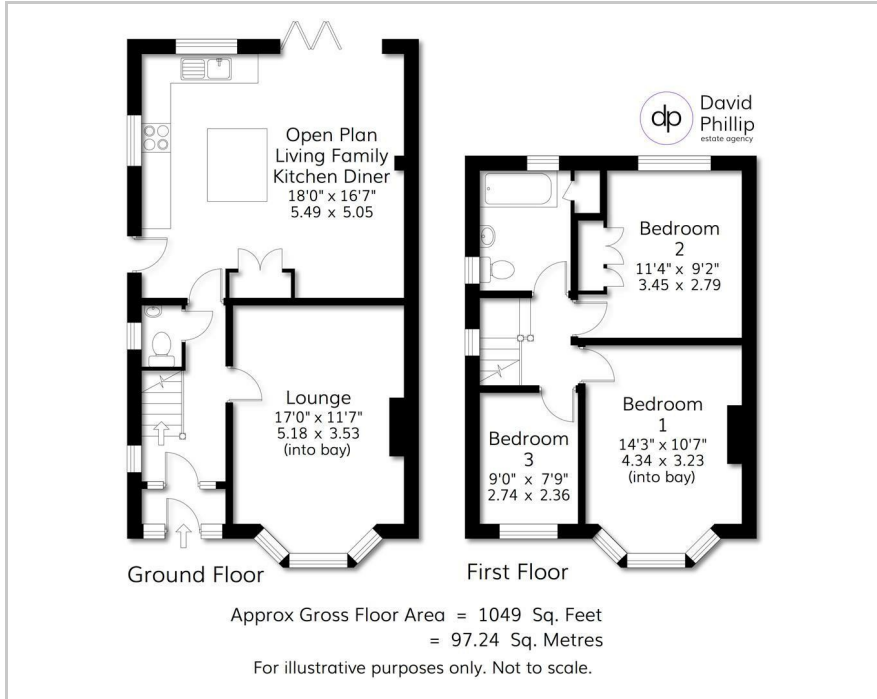


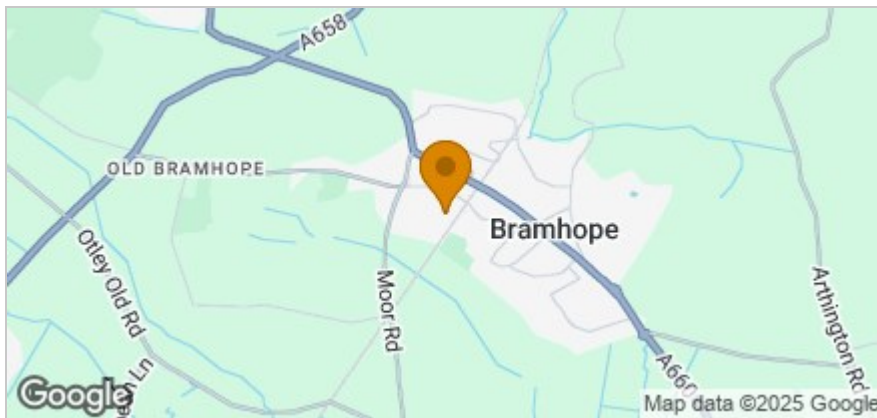


14 Parklands Crescent, Bramhope, LS16 9AQ
Price Guide £485,000

Floor Plan



Area Map



Accommodation

- An Immaculately Presented Semi-Detached Family House
- Offered with Three Bedrooms and Luxury House Bathroom
- Stunning Open Plan Recently Fitted Living Family Kitchen Diner
- Spacious Reception Room and Guests' Cloaks/WC
- Private Enclosed Westerly Facing Rear Lawned Garden with Patio
- Garage and Off-Street Parking for Three Cars
- Enjoying a Small Cul-de-Sac Location in a Highly Popular Area
- Energy Performance Certificate (EPC) Rated D / Freehold, Leeds City Council Tax Band E

Viewing

Please contact our David Phillip Estate Agents Office on 01134 676 400 if you wish to arrange a viewing appointment for this property or require further information.

Energy Efficiency Graph



These particulars, whilst believed to be accurate are set out as a general outline only for guidance and do not constitute any part of an offer or contract. Intending purchasers should not rely on them as statements of representation of fact, but must satisfy themselves by inspection or otherwise as to their accuracy. No person in this firm's employment has the authority to make or give any representation or warranty in respect of the property.